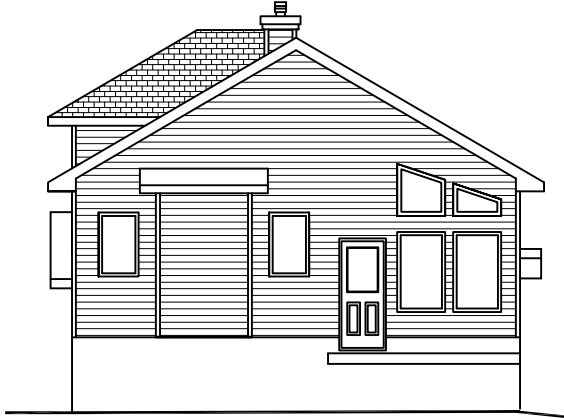
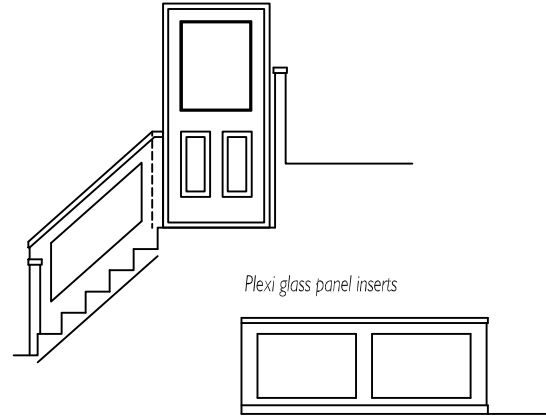


PARK ROYAL HOMES

FLOOR PLAN ALTERNATIVES



REAR VIEW



Plexi glass panel inserts

ALTERNATIVE # 1

ADD BACK STAIRS TO LOWER LEVEL
C/W REVISED WINDOWS
& LOWERED DECK

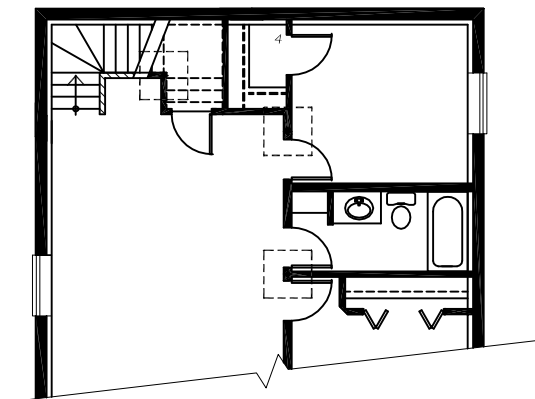
A) HEMLOCK HANDRAIL & CAP ON STUBWALL

B) OAK HANDRAIL & CAP ON STUBWALL

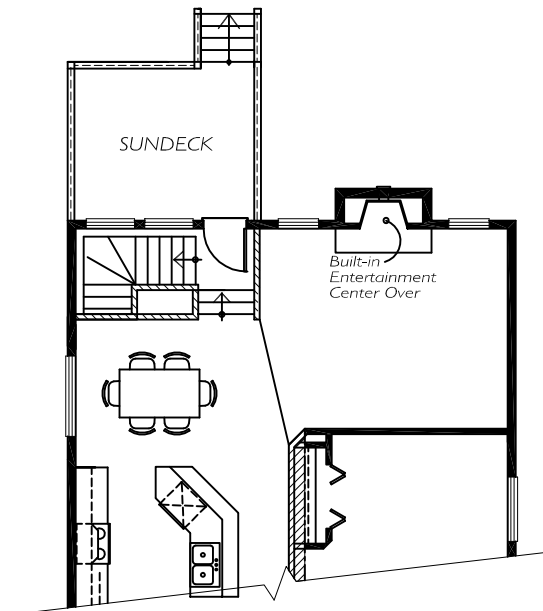
C) MAPLE HANDRAIL & CAP ON STUBWALL

ALTERNATIVE # 2

ADD PLEXIGLASS PANELS TO STUBWALL
ADDED IN ALTERNATIVE # 1



LOWER LEVEL
701 SQ. FT.



MAIN LEVEL
1466 SQ. FT.

BIRCHWOOD

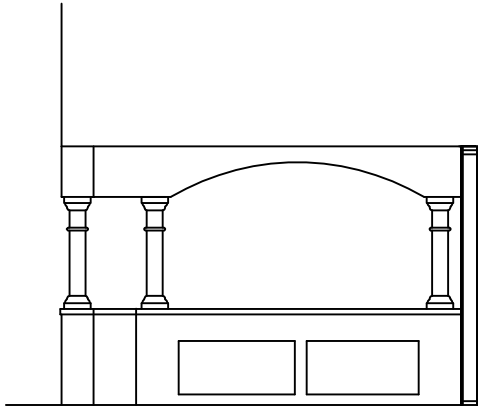
1405 / 2098 SQ. FT. Feb 2/06

(BI-LEVEL)

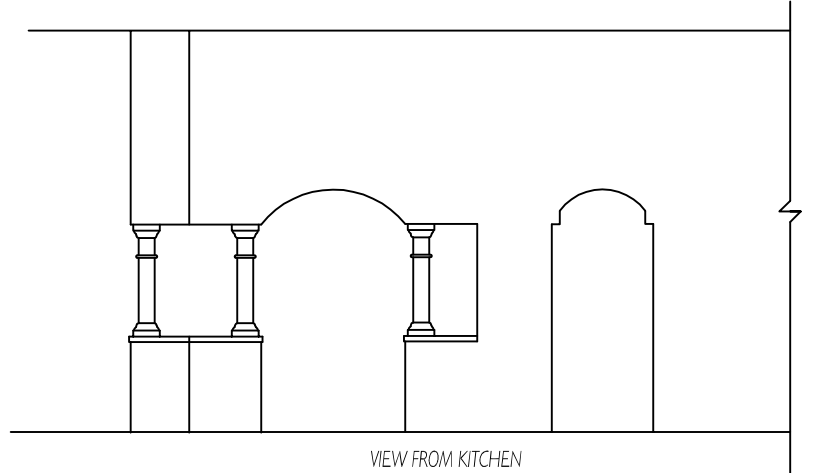
Page 1 of 3

PARK ROYAL HOMES

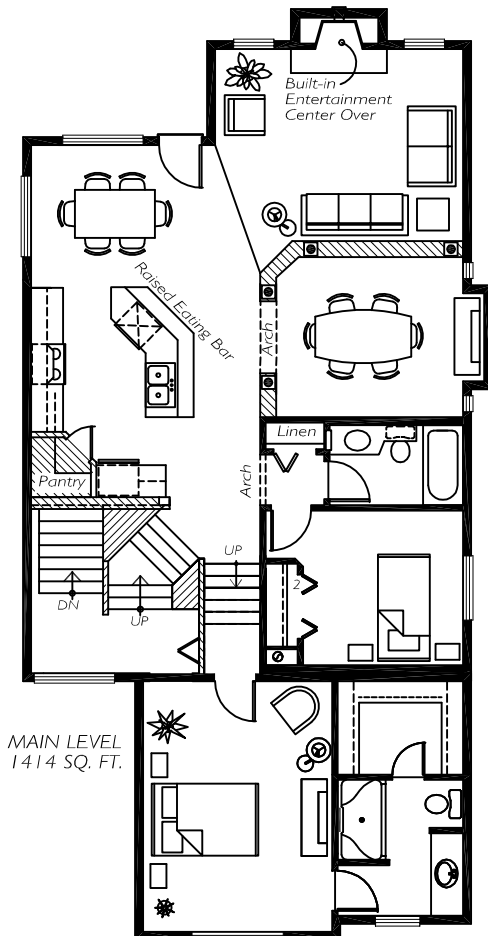
FLOOR PLAN ALTERNATIVES



VIEW FROM DINING ROOM



VIEW FROM KITCHEN



MAIN LEVEL
1414 SQ. FT.

ALTERNATIVE # 3

CHANGE BEDROOM 3 TO DINING ROOM
C/W ARCH, PILLARS, SHELVES, POT LIGHTS
& WOOD CAP ON STUBWALL
A) MDF CAP ON STUBWALL

B) OAK CAP ON STUBWALL

C) MAPLE CAP ON STUBWALL

ALTERNATIVE # 4

ADD 6'-6" WIDE BOXOUT TO DINING ROOM
CHANGING TO 2-12" x 72" WINDOWS,

BIRCHWOOD

1405 / 2098 SQ. FT. Feb 2/06

(BI-LEVEL)

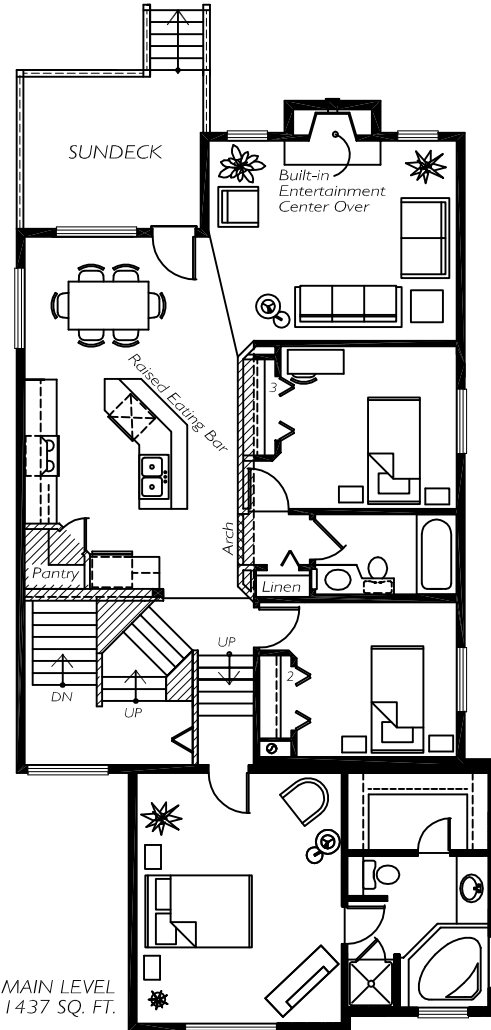
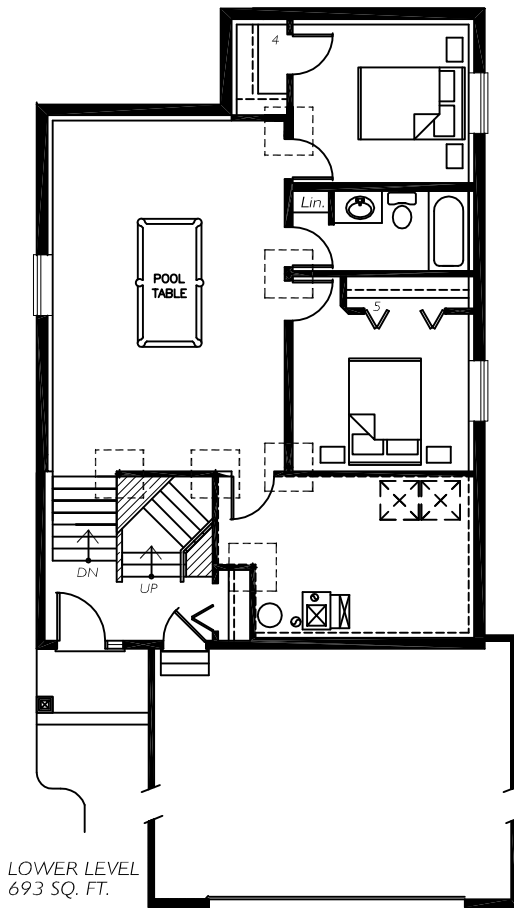
Page 2 of 3

PARK ROYAL HOMES

FLOOR PLAN ALTERNATIVES



MODEL "E"



ALTERNATIVE # 5

- WIDEN GARAGE 2'
- WIDEN MASTER BEDROOM 2'
- ADDING WINDOW & LINEN SHELVES
- CHANGING TO 36'x60' SHOWER
- ADDING JETTED TUB

A) MODEL "A"

B) MODEL "P"

C) MODEL "E"

BIRCHWOOD

1405 / 2098 SQ. FT. Jul 19/06

(BI-LEVEL)

Page 3 of 3